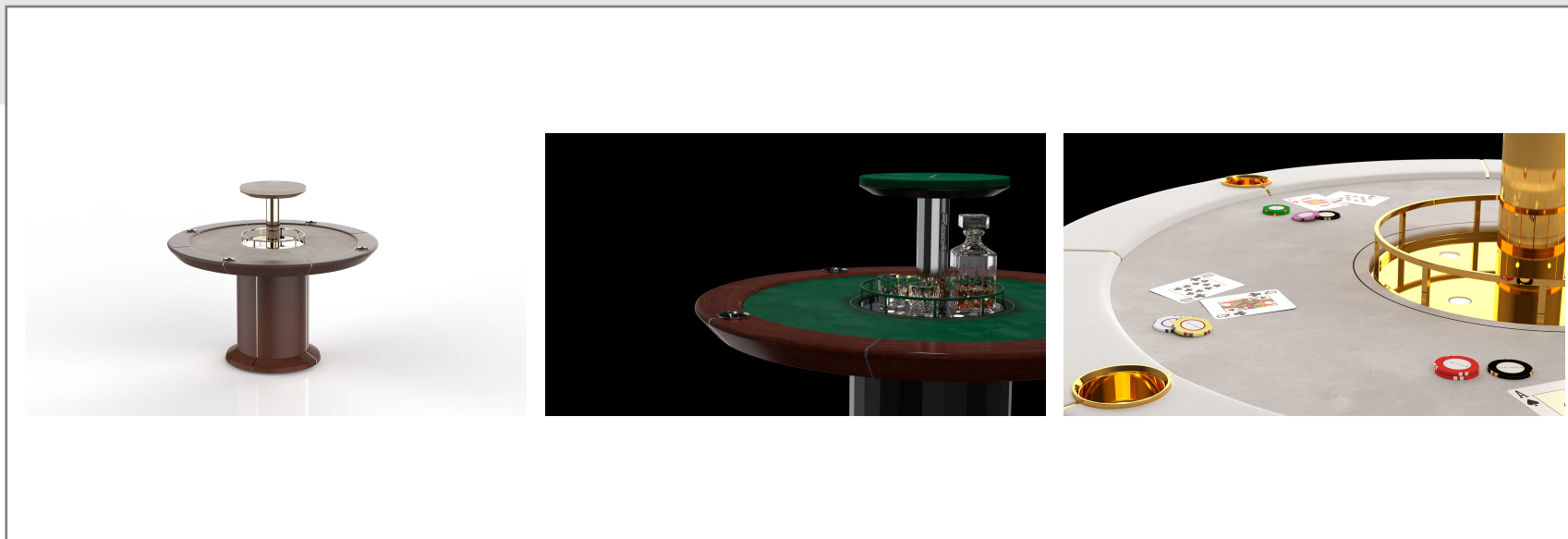
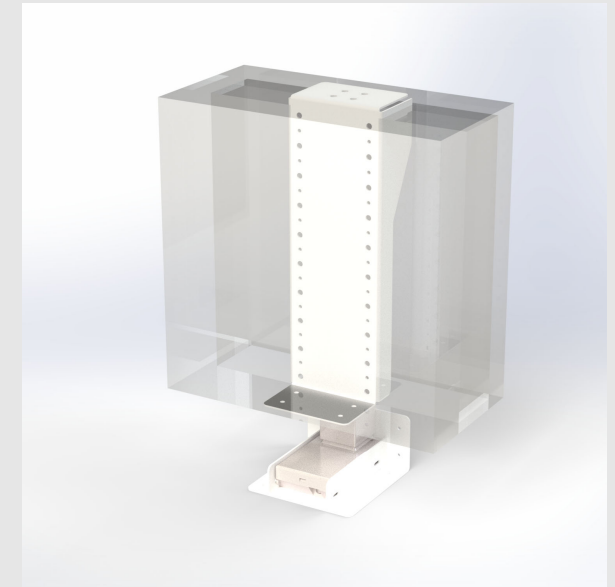


# MODEL PT 60

Max Weight: 60kgs

| Extends: 660mm

The Tono PT 60 is a premium hidden bar lift mechanism designed for poker tables and luxury furniture. Engineered for smooth and silent operation, it seamlessly elevates and conceals a built-in bar or storage unit at the touch of a button. With a sturdy motorized lift system, the PT 60 offers effortless access to drinks and accessories while maintaining a sleek, clutter-free table design. Perfect for high-end gaming tables, home bars, and entertainment spaces, the PT 60 combines functionality with sophistication.



Silent



Reliable

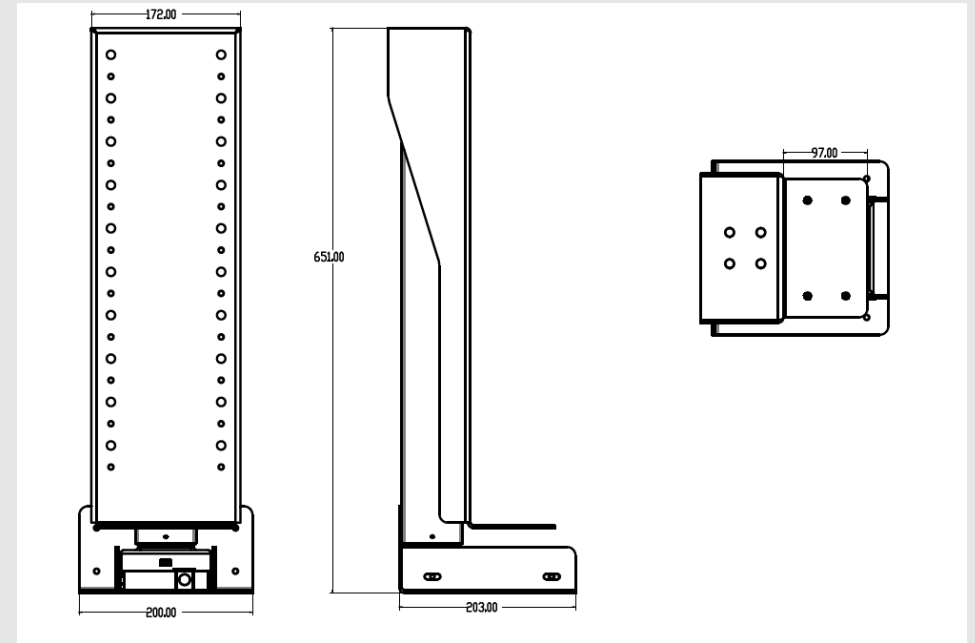


Sleek

# MODEL PT 60

## TECHNICAL SPECIFICATIONS

- 60 kg total lift capacity (including enclosure box and its contents)
- Travels 66 cm
- No exposed tracks, gears or scissors
- Draws 3.5 Amps @ 110V and 1.75 Amps @ 220V at max thrust
- Quiet – runs at just 45 dB
- Screw-driven mechanism
- Steel construction
- “Soft Start” and “Soft Stop” for smooth ride



## WHAT'S IN THE BOX

- Motorized lift column (the motorized unit is pre-assembled and ready to use)
- Heavy duty load support bracket
- Base plate and upper back mounting bracket
- Ball bearing sliders for vertical stabilization
- Control box with power cord
- Wired control switch
- Cord control wrap
- All hardware for assembly and mounting
- Full assembly instructions

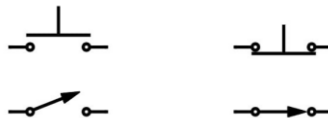
## CONTROL OPTIONS



Wired Keypad



Optional Wireless Remote Control



Optional Contact Closure for Automation